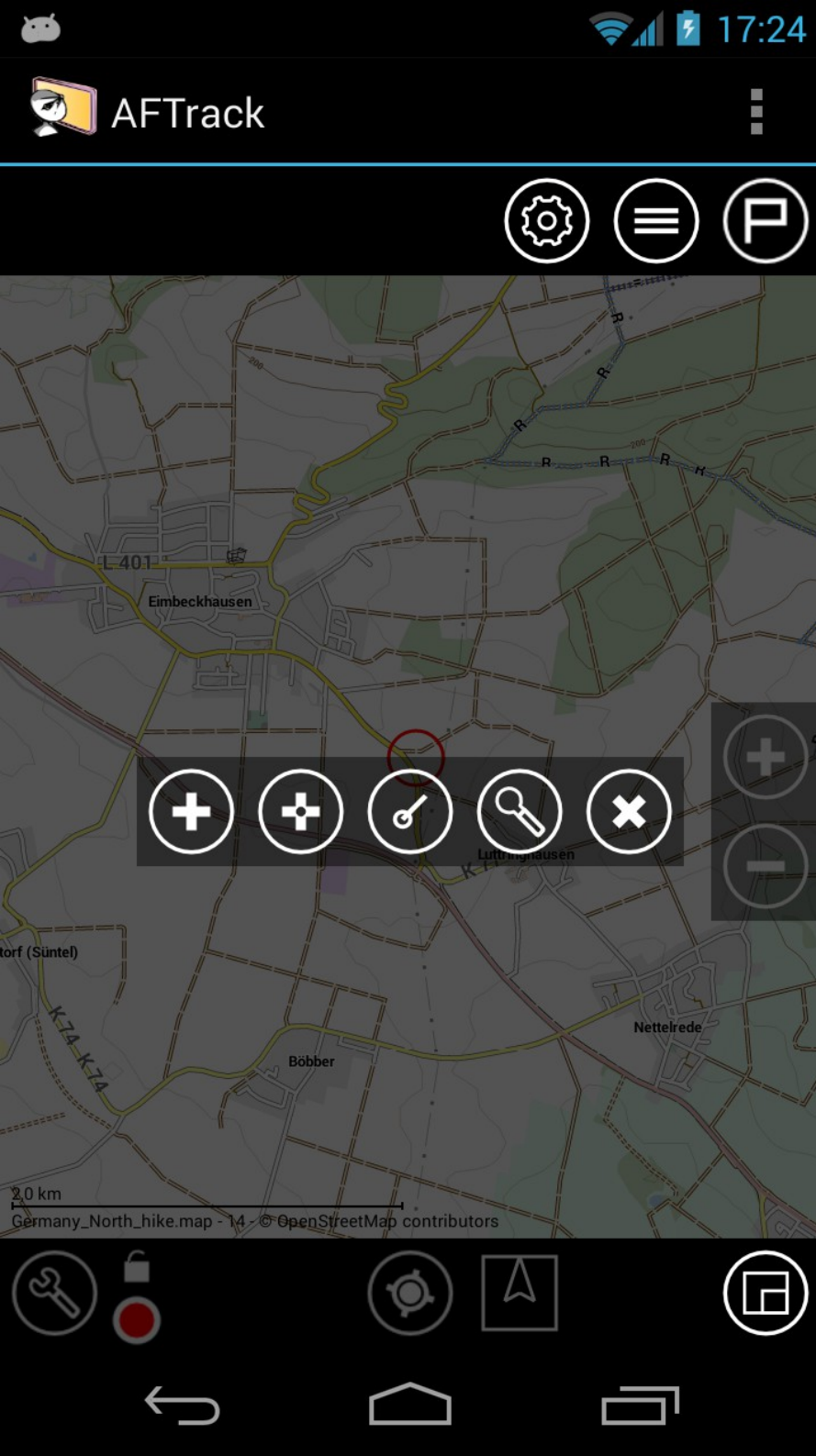


# AFTrack

Working  
with way points



# AFTrack

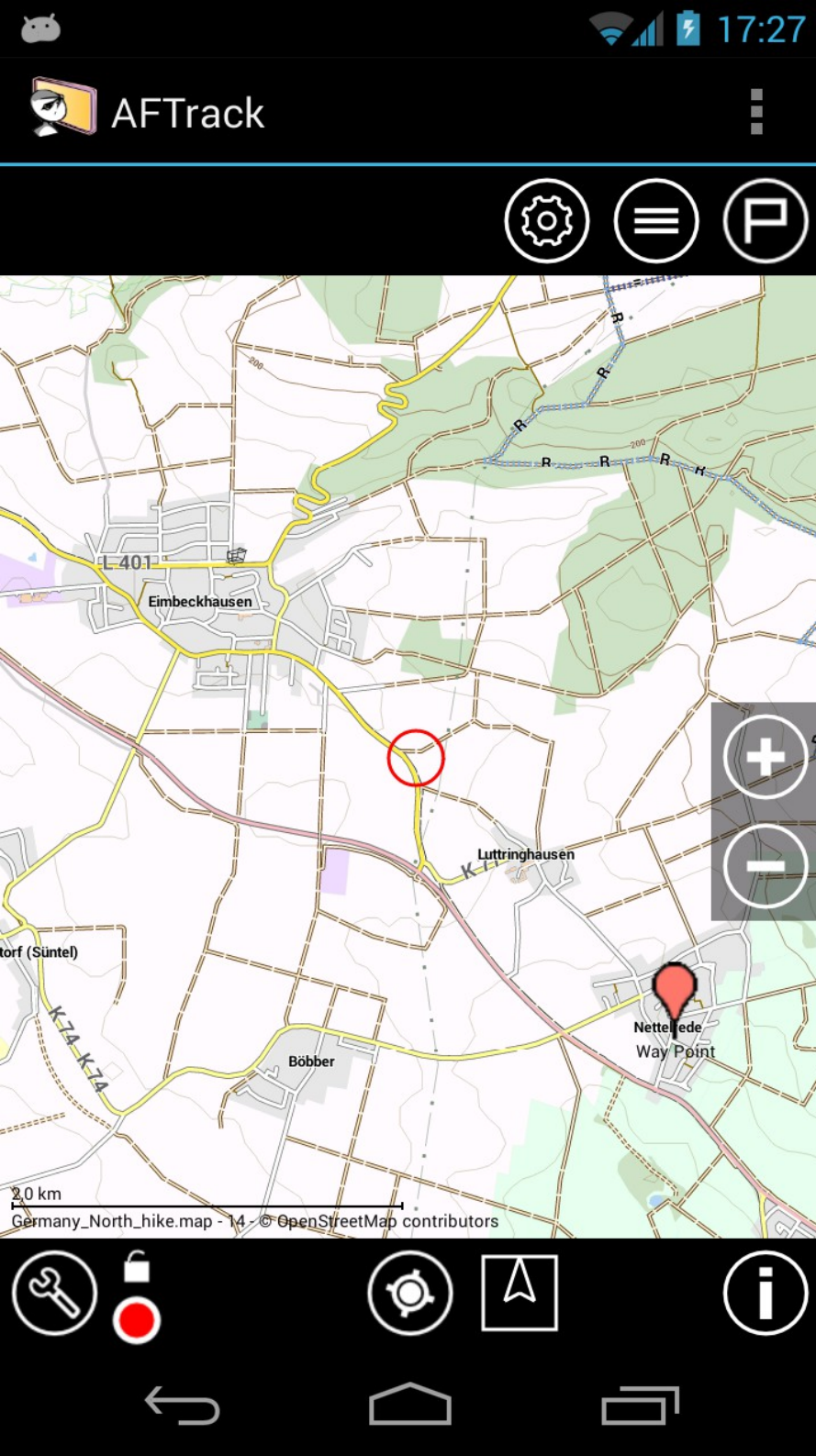
Add a way point

With a long press on the map

Then select

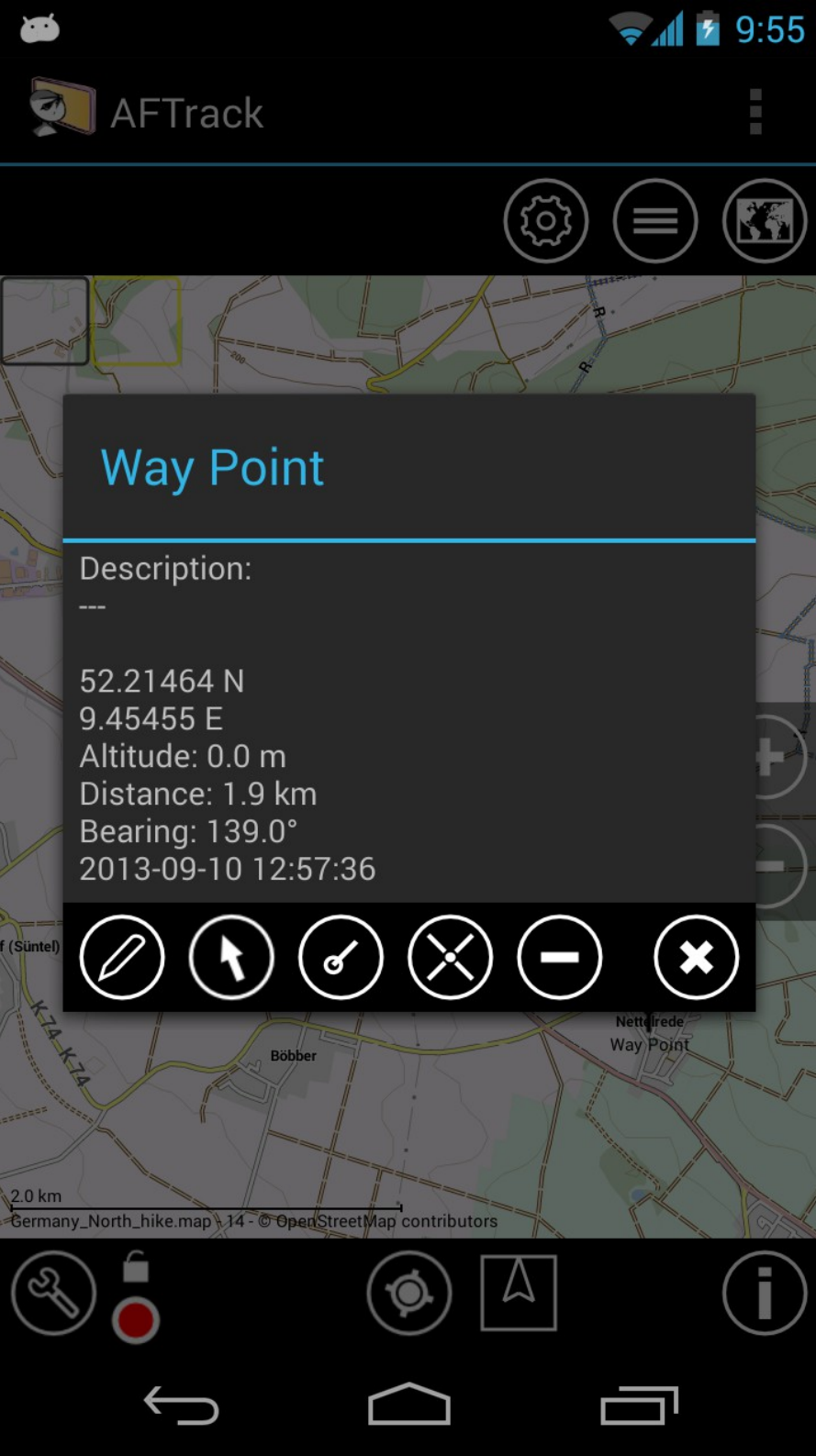
1. Position as pressed
- or
2. GPS position

# AFTTrack



Edit the new way point  
with a short press on the  
icon

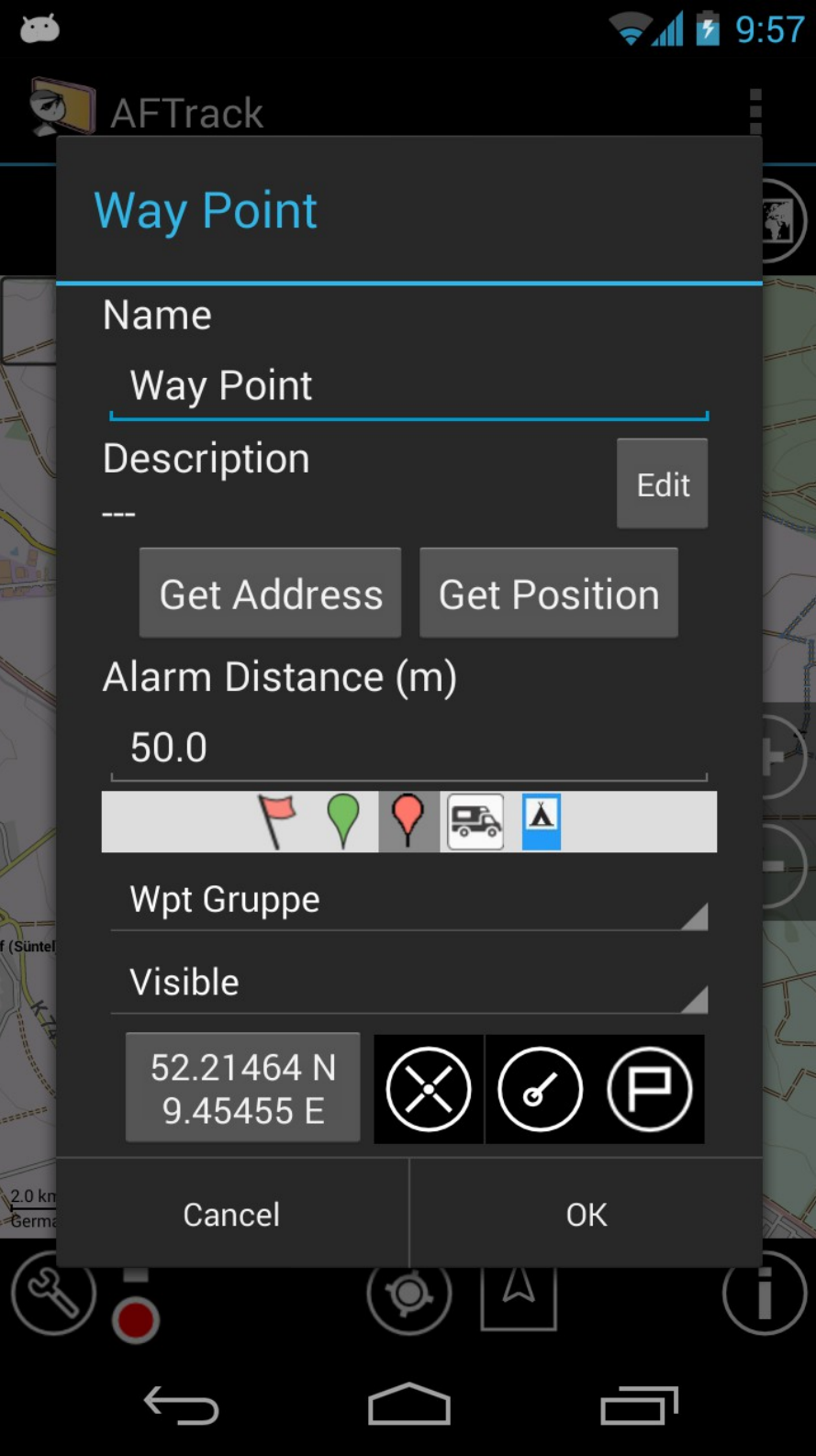




# AFTrack

## Select

- Edit way point
- Go to this point
- Bearing from here
- Move way point
- Delete it
- Close dialog



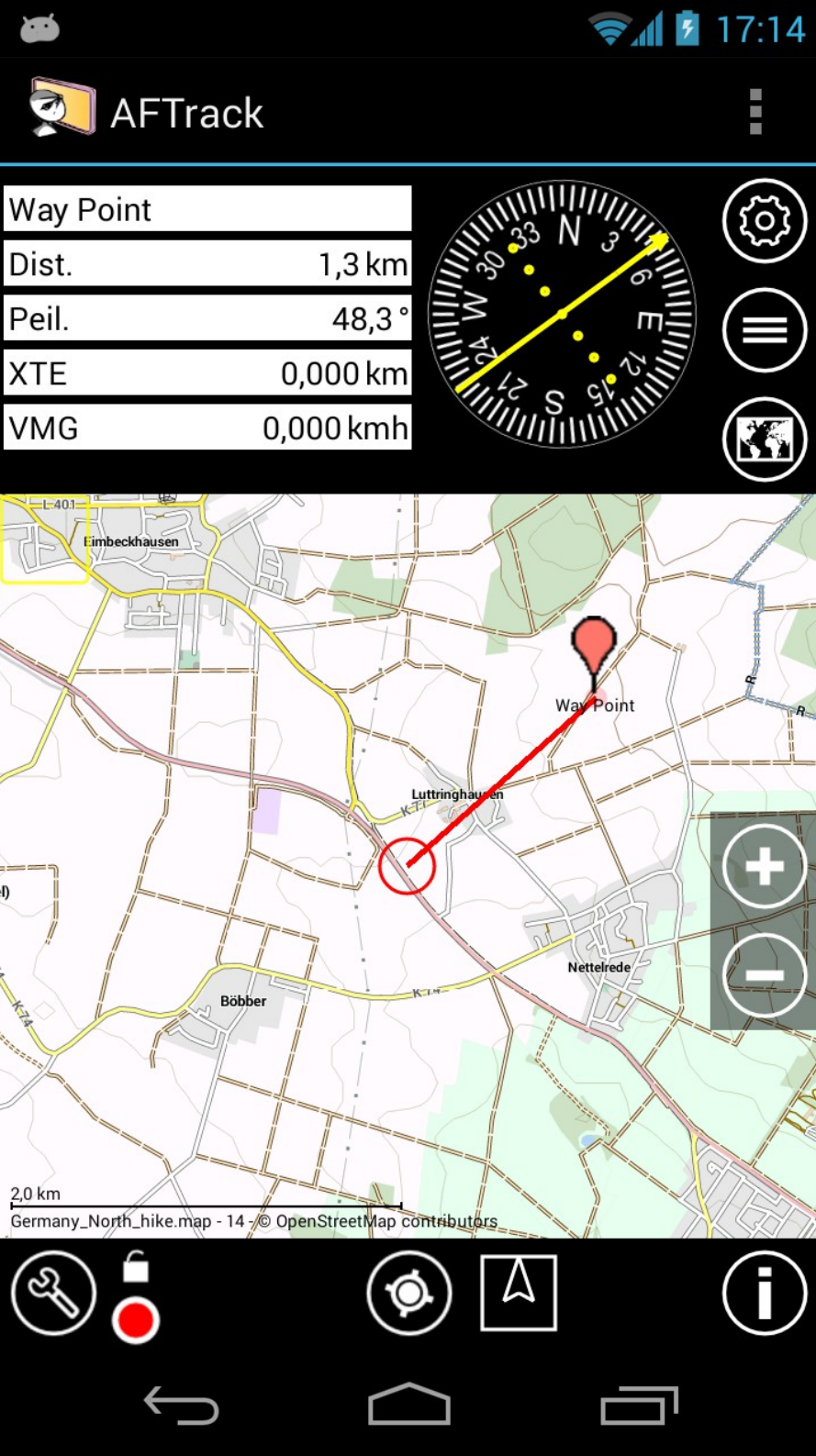
# AFTrack

Dialog

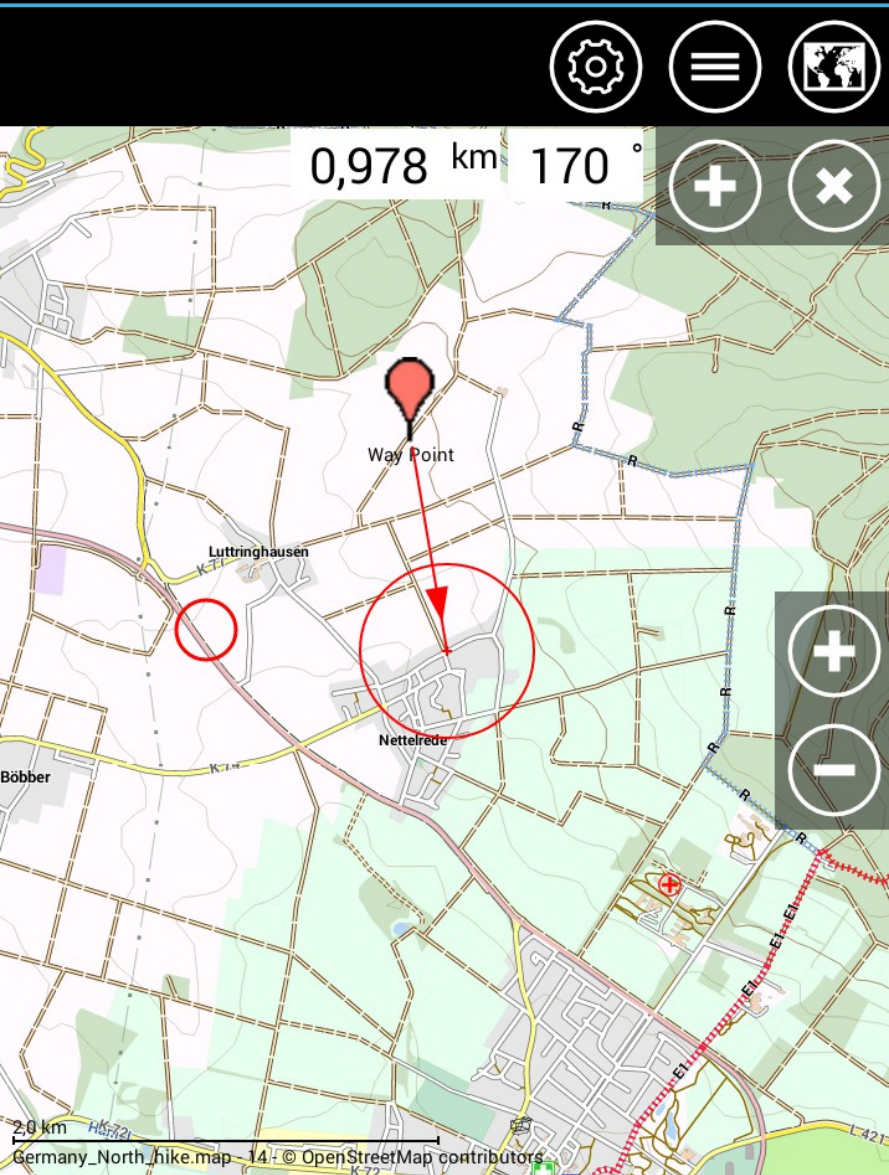
Way point

- Name
- Description
- get address from position
- get position from description
- Assign group
- Visibility
- Change position
- bearing, move, show

# AFTTrack



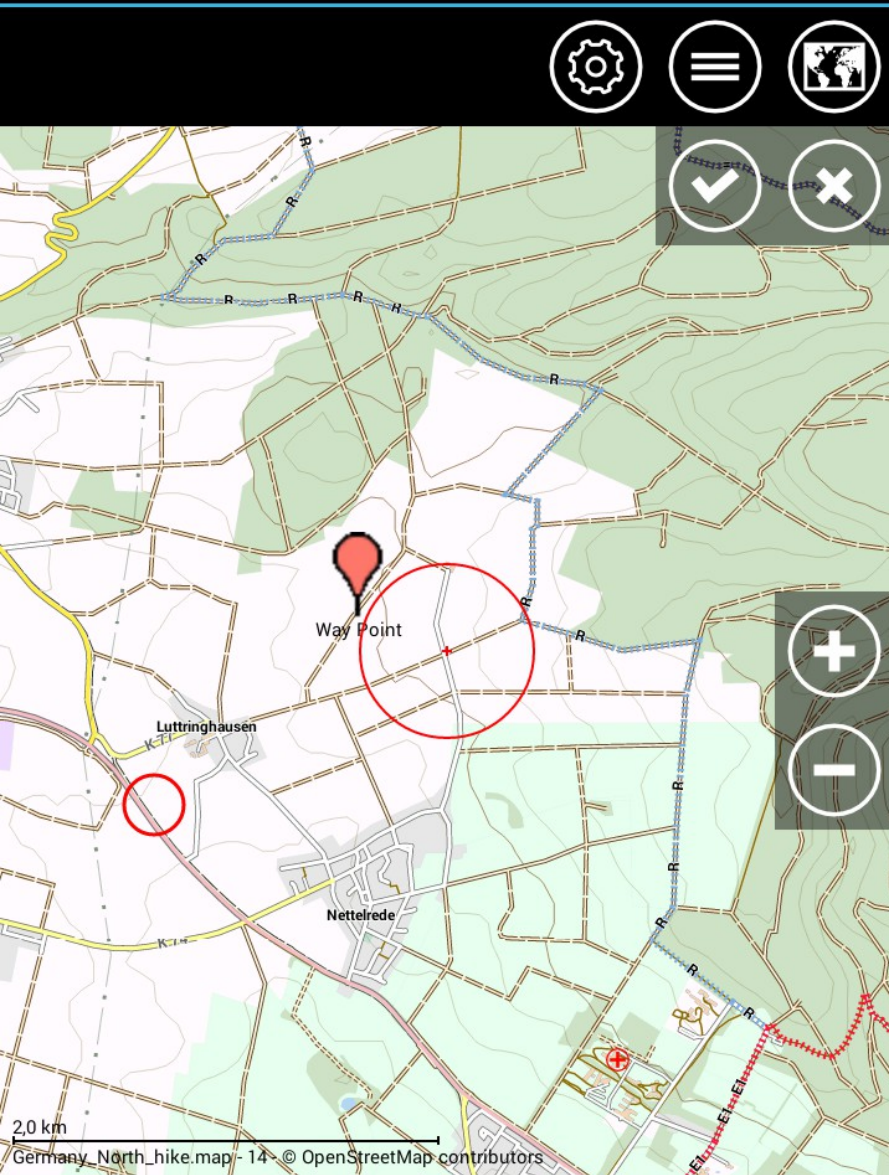
GoTo a way point



# AFTrack

Bearing from this way point  
And add a new one

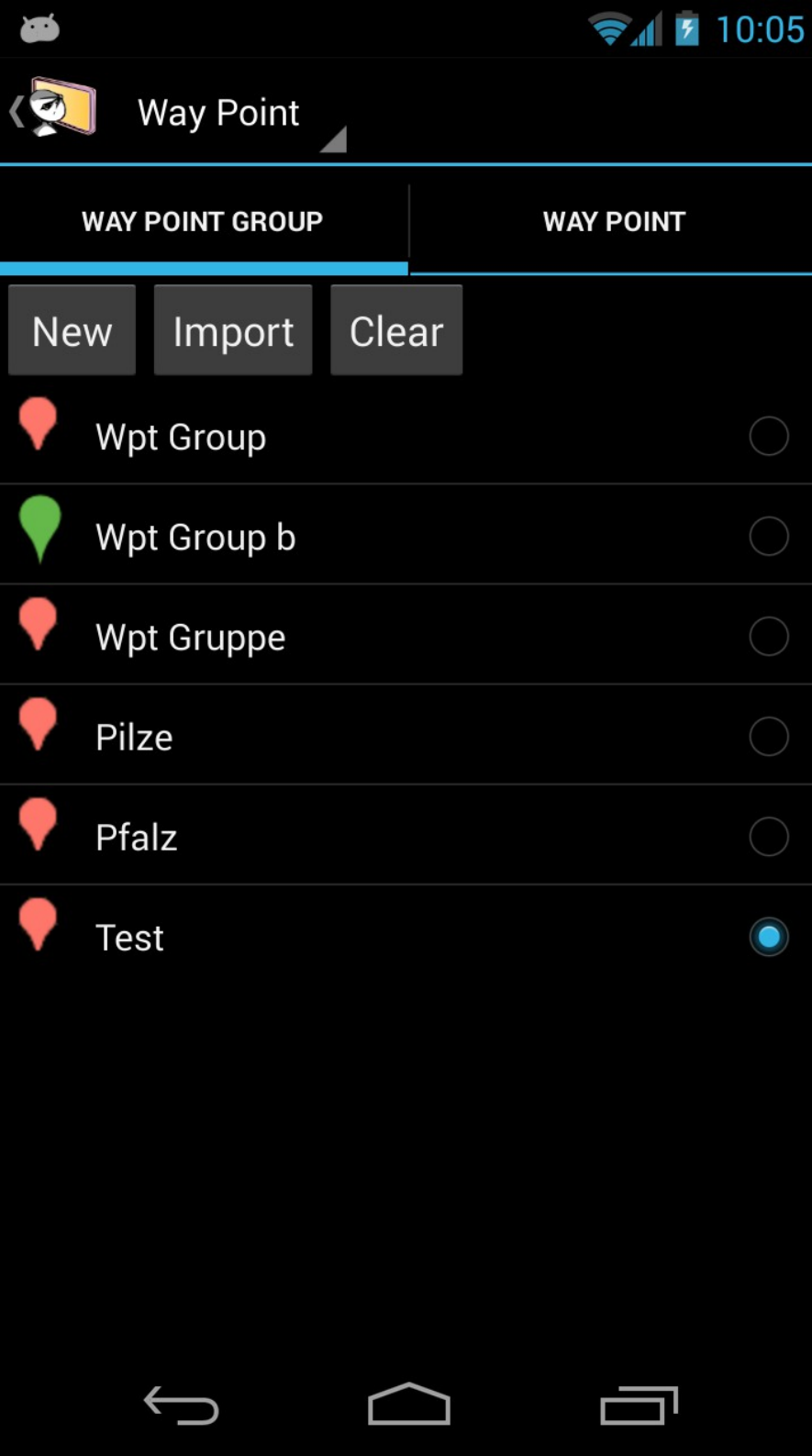




# AFTrack

Move a way point and save the result





# AFTrack

Way points are organized in groups  
New way points inherit the properties of the group (Icon, Alarm,...)

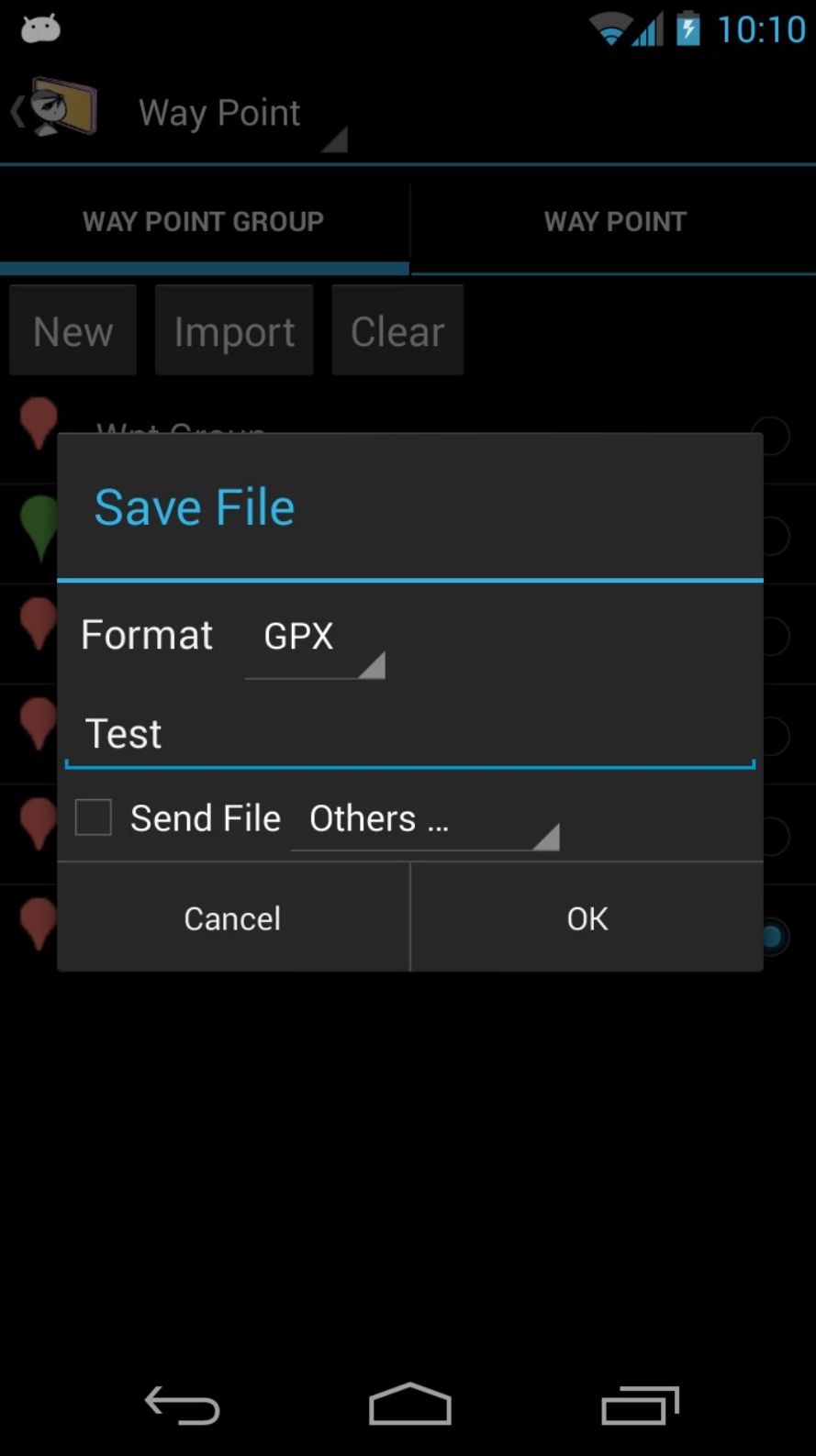
Verzeichnis: /storage/emulated/0/data/aftrack

- ../
- cache
- conf
- db
- db\_alt
- export
- icon
- maps
- GC11X2X.gpx
- Rungholt-test.gpx

# AFTrack

Import way points

Select file  
GPX or KML format



# AFTrack

## Export group

Do a long press on the list entry and select 'Export as'  
The file can be send (as OSM upload or e.g. to the Dropbox)