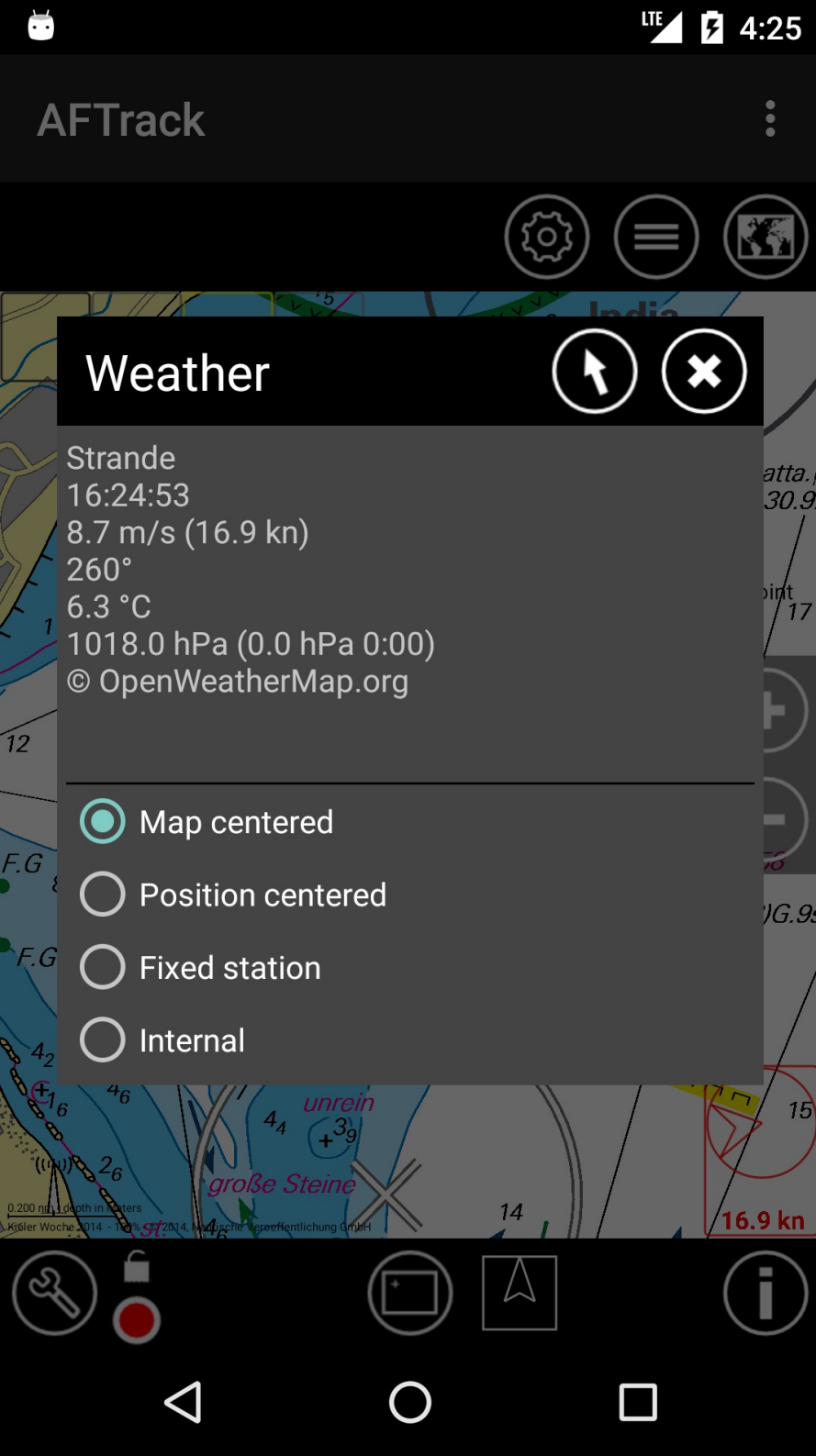


AFTrack

Wind Routing

Wind-Info

Is showing the current wind direction and speed. In the display settings this and wind routing must be activated.



AFTrack

Wind Routing

There are some settings what to see. By default the values come from the next weather station.



AFTrack

Wind Routing

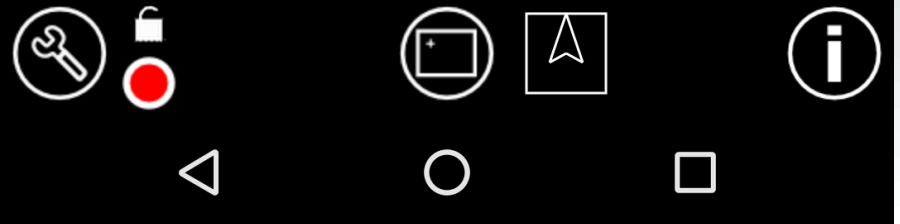
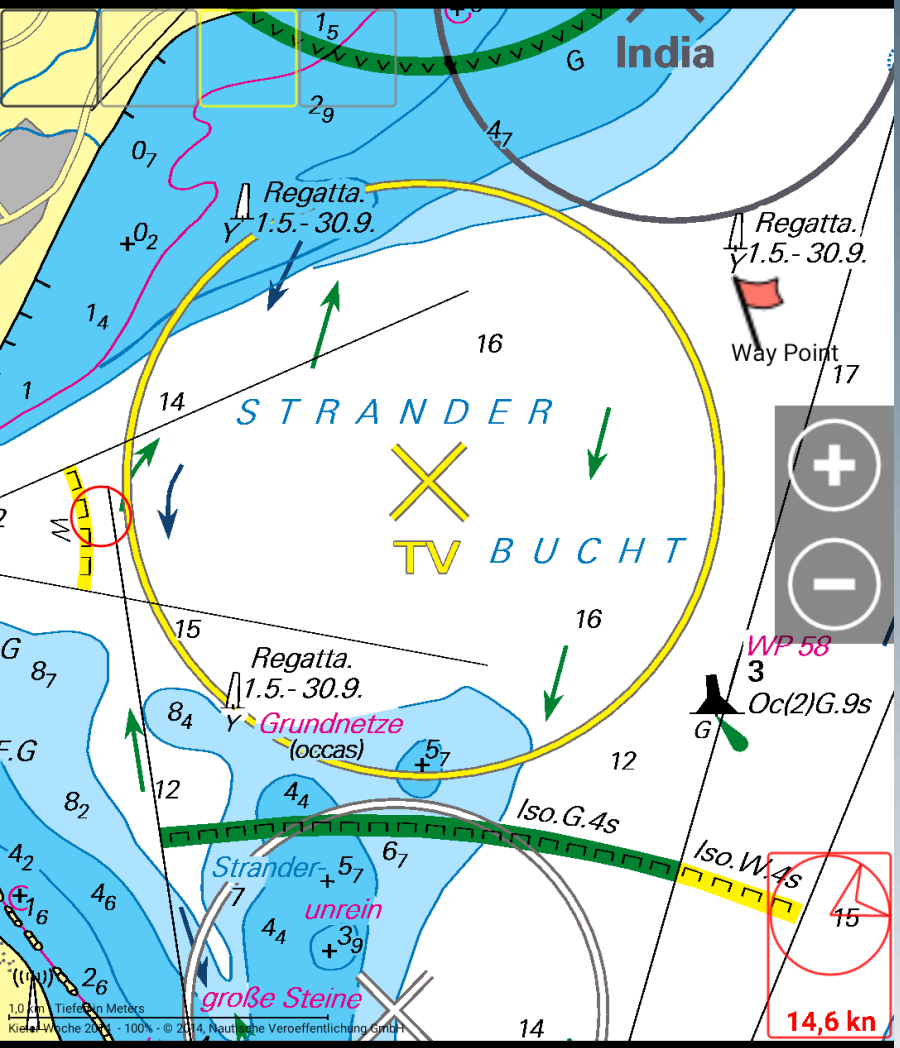
With the  button the manual wind settings are visible.



AFTrack

Wind Routing


The settings can be true or apparent wind.



AFTrack

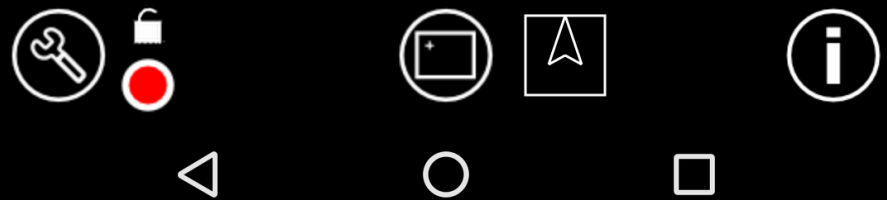
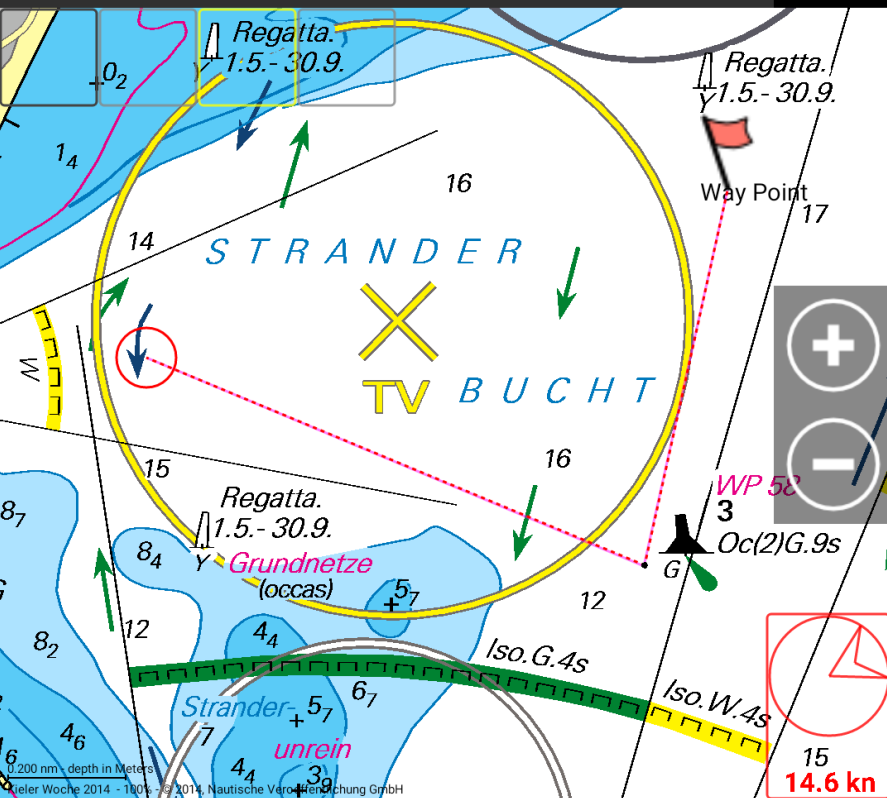
Wind Routing

With a long tap on the map create a way point.

 And with a tap on the symbol you activate the GoTo mode.

AFTrack

Way Point	
Dist.	1.6 nm
Bear.	73.9°
XTE	0.000 nm
VMG	0:15 1.7 kn



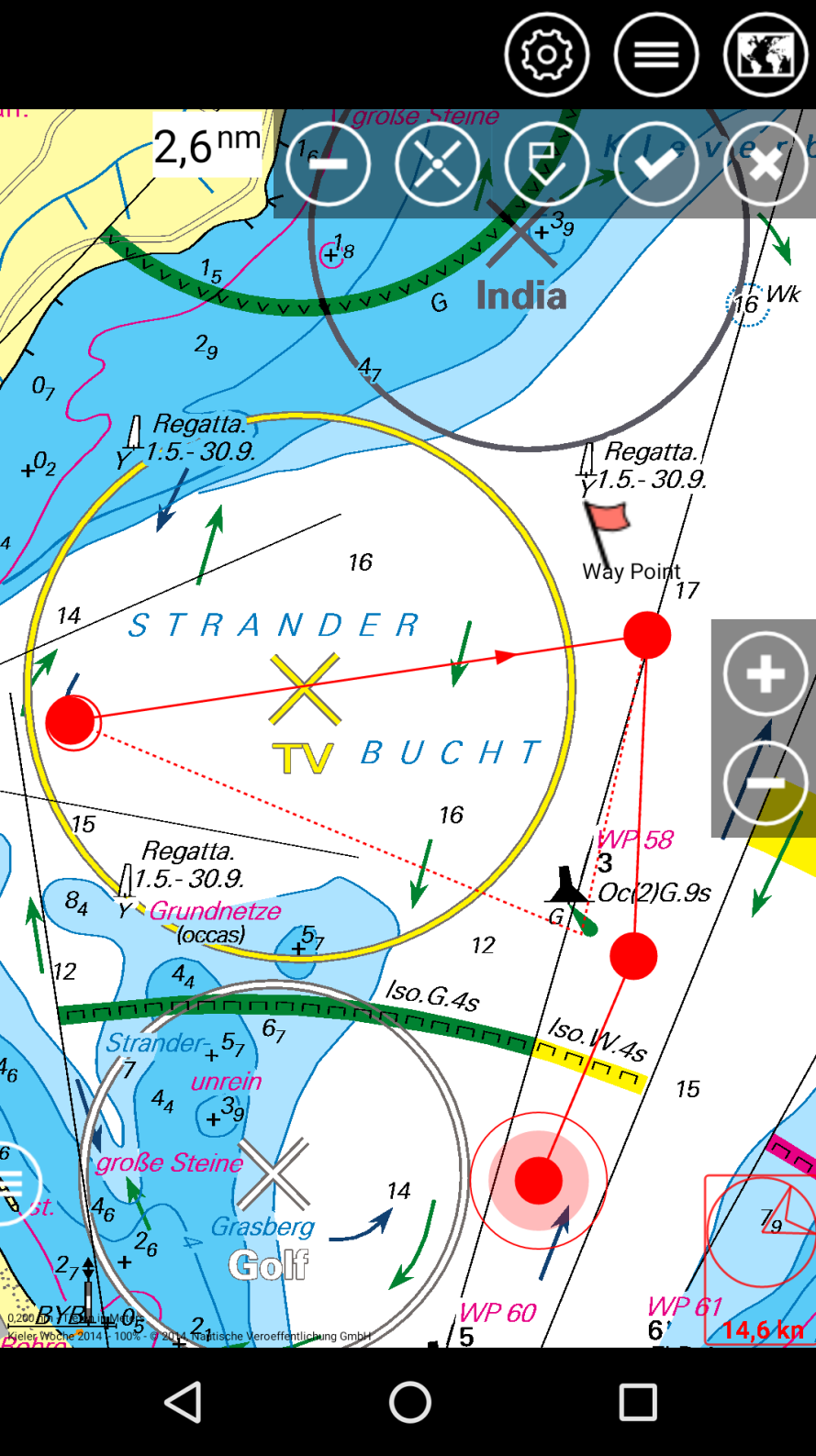
AFTrack

Wind Routing

Now the way is displayed depending on the wind, the distance and the time to the destination is adjusted as well. This information is continued. For control the starting line is also shown.

AFTTrack

Wind Routing



This functions are also used with the route design.